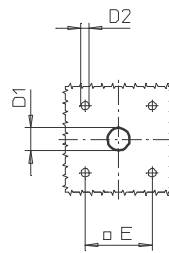
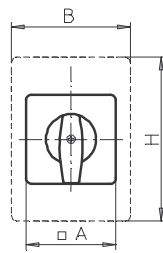
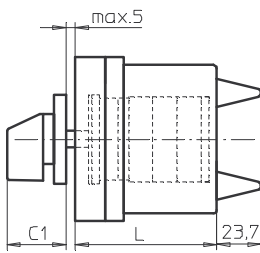
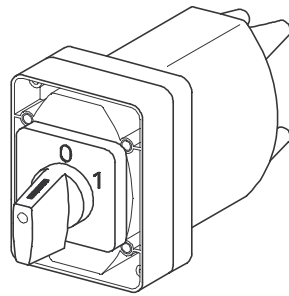


# Front Mounting Switches

**sälzer**



**Product line  
P200**

**Front mounting switch**  
With dust protection cover

**Four hole mounting**  
36 x 36 mm

**005M1 (IP66)**

Complete switch	Poles	Product line	Rated data (IEC 60947)			Order code number				
			Operational current I <sub>e</sub>	Operational power at 380–440 V						
			AC-21A A	AC-23A kW	AC-3 kW					
Rotary Cam Switches	1 ... 6	P200	20	7,5	5,5	<b>P220 - 61 ... - 005M1</b>				
Switching angle 30°/45°/60°/90°	1 ... 4		25	11	7,5	<b>P225 - 61 ... - 005M1</b>				
<b>SMD modules for basic switch A01</b>										
Mounting form module for 005M1			P200			<b>BFA2 - 005</b>				
M-operator module 48 x 48 mm, mounting form 005M1						<b>2AM1</b>				
Escutcheon black, handle black										
Legend plate silver, operator module 005M1						<b>FAS2 - ....</b>				
<b>Dimensions (mm)</b>										
<b>Type</b>	<b>A</b>	<b>B</b>	<b>C1</b>	<b>D1</b>	<b>D2</b>	<b>E</b>	<b>H</b>	<b>L with ... stages</b>		
								<b>1</b>	<b>2</b>	<b>3</b>
P220	48	64	32	12	4,5	36	88	80	80	80
P221	48	64	32	12	4,5	36	88	80	80	-
P225	48	64	32	12	4,5	36	88	80	80	-
P226	48	64	32	12	4,5	36	88	80	80	-