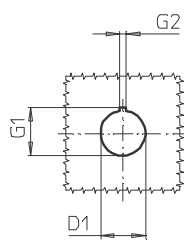
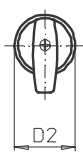
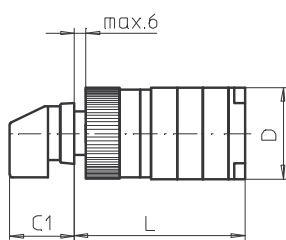
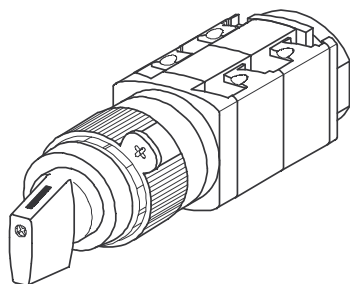


# Front Mounting Switches

**sälzer**



**Product line  
P200**

**Front mounting switch  
with front ring**

**Single hole mounting  
ø 22,5 mm**

**218M1 (IP66)**

Complete switch	Poles	Product line	Rated data (IEC 60947)			Order code number
			Operational current I <sub>e</sub>	Operational power at 380–440 V		
			AC-21A A	AC-23A kW	AC-3 kW	
Rotary Cam Switches Switching angle 30°/45°/60°/90°	1 ... 24	P200	20 25	7,5 11	5,5 7,5	<b>P220 - 61 ... - 218M1</b> <b>P225 - 61 ... - 218M1</b>

## SMD modules for basic switch A01

Mounting form module for 218M1

P200

**BFB2 - 219**

Front ring black ø 30,5 mm, M-handle black, mounting form 218M1  
(Front ring without legend)

**2HM1**

## Dimensions (mm)

Type	C1	D	D1	D2	G1	G2	L with ... stages (max. 12)							each add. stage
							1	2	3	4	5	6	7	
P220	32	44	22,5	30,5	24,2	3,2	66	79	92	105	118	131	144	13
P221	32	44	22,5	30,5	24,2	3,2	69,5	86	102,5	119	135,5	152	168,5	16,5
P225	32	46	22,5	30,5	24,2	3,2	70	85	100	115	130	145	160	15
P226	32	46	22,5	30,5	24,2	3,2	73,5	92	110,5	129	147,5	166	184,5	18,5