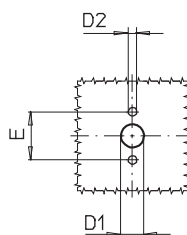
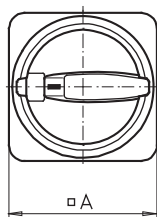
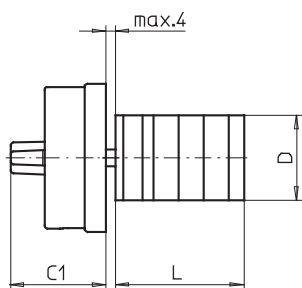
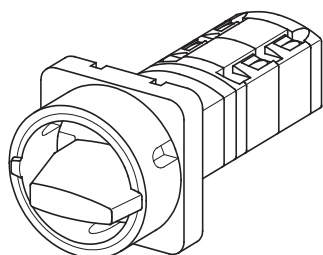


# Front Mounting Switches

**sälzer**



**Product line  
P100**

**Front mounting switch**

**Two hole mounting  
20 x 20 mm**

**033M1 (IP66)  
033M4 (IP66)**

Complete switch	Poles	Product line	Rated data (IEC 60947)			Order code number
			Operational current I <sub>e</sub> AC-21A A	Operational power at 380-440V AC-23A kW		
Main Switch Switching angle 90° OFF position padlockable 09h	1 ... 16	P100	10	3	2,2	<b>P110 - 61 ... - 033M1</b>
Main/Emergency-Off Switch Switching angle 90° OFF position padlockable 09h	1 ... 16	P100				<b>P110 - 61 ... - 033M4</b>

### SMD modules for basic switch A01

Mounting form module for 033M.

P100

**BFA1- 033**

M-padlock device 48 x 48 mm, mounting form 033M1  
Escutcheon black, padlockable handle black

**1BM1**

M-padlock device 48 x 48 mm, mounting form 033M4  
Escutcheon yellow, padlockable handle red

**1BM4**

### Dimensions in mm

Type	A	C1	D	D1	D2	E	L with ... stages							
							1	2	3	4	5	6	7	8
P110	48	31	29	8	3,2	20	39	51	63	75	87	99	111	123