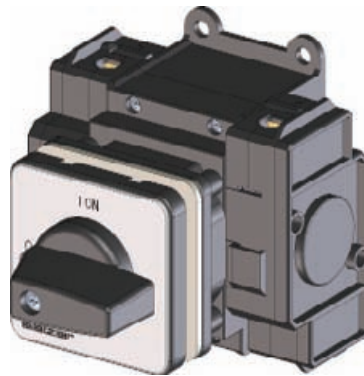


Front Mounting Switches

sälzer

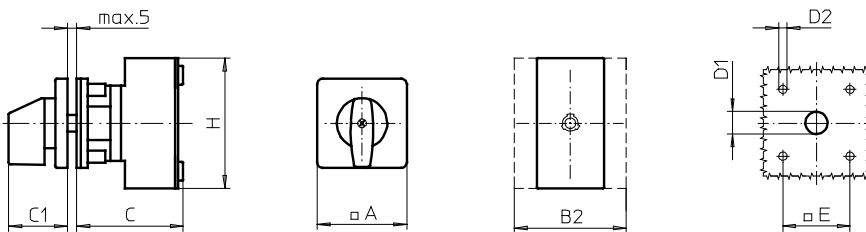


Product line D200

Base mounting switch

**Four hole mounting
36 x 36 mm**

003M1 (IP66)



**Complete switch
Order code number**

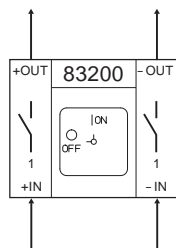
Terminal capacities
solid multiwire
min max min max

Voltage range DC21-B
250V 450V 650V 800V 1000V

Standard arc reduction system

D211-83200-003M1	1,00	10,00	0,75	6,00	20A	16A	10A
D221-83200-003M1	1,00	10,00	0,75	6,00		32A	20A
D222-83200-003M1	4,00	16,00	2,50	10,00	50A	40A	32A

1 string



SMD modules for basic switch modules

Mounting form module for 003M1	D200	BFB2 - 003
Operator module		2AM1
Legend plate silver, mounting form 003M1		FAS2 - 9... (FA number)

Dimensions (mm)

Product line	A	B2	C	C1	D1	D2	E	H
D200-DC – 1 string	48	77	61	32	12	4,5	36	80