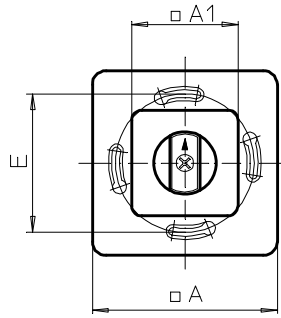
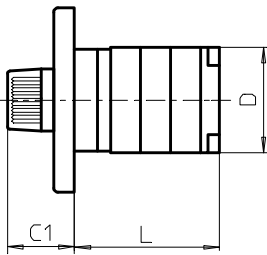
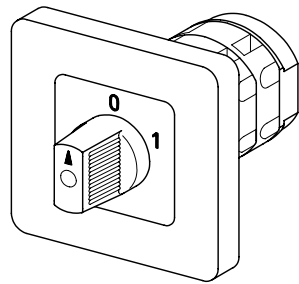


Front Mounting Switches

sälzer



**Product line
M200**

Front mounting switch

Wall mounting

025N3 (IP30)

Complete switch	Poles	Product line	Rated data (IEC 60947)			Order code number
			Operational current I _e	Operational power at 380–440 V		
			AC-21A A	AC-23A kW	AC-3 kW	
Rotary Cam Switches	1 ... 6	M200	20	7,5	5,5	M220 - 61 ... - 025N3
Switching angle 30°/45°/60°/90°	1 ... 2		25	11	7,5	M225 - 61 ... - 025N3

SMD modules for basic switch

Mounting form module for 025N3
Escutcheon white, N-handle white

M200

BFA2 - 025N3

Legend plate silver, mounting form module 025N3

FAS2 - (FA number)

Dimensions (mm)

Product lines	A	A1	C1	D	E	L with ... stages		
						1	2	3
M220	80	46	31	46	60	36	46	56
M221	80	46	31	46	60	39	-	-
M225	80	46	31	48	60	39	-	-