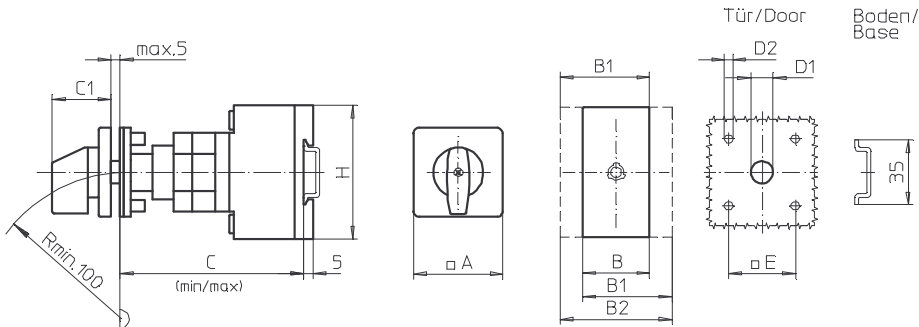
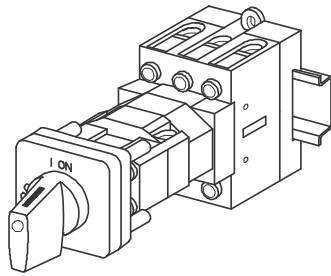


Base Mounting Switches



Product lines
H400-A/ -D/ -E

Base mounting switch

Door interlock

Modular shaft extension

Four hole mounting

48 x 48 mm front

242M1 (IP66)

Complete switch	Poles	Product line	Rated data (IEC 60947)			Order code number
			Operational current I _e	Operational power at 380–440 V		
			AC-21A A	AC-23A kW	AC-3 kW	
ON-OFF Switches Switching angle 90°	3 ... 8	H400-A/ -D	63	22	18,5	H406 - 41 ... - 242M1
			80	30	22	H408 - 41 ... - 242M1
			100	37	30	H410 - 41 ... - 242M1
			125	45	37	H412 - 41 ... - 242M1
Changeover with OFF Switching angle 90°	3 ... 4	H400-E	63	22	18,5	H406 - 71 ... - 242M1
			80	30	22	H408 - 71 ... - 242M1
			100	37	30	H410 - 71 ... - 242M1
			125	45	37	H412 - 71 ... - 242M1

SMD modules for basic switch A02		
Mounting form module for 242M1	H400-A/ -D H400-E	BFA4 - 242 BFC4 - 242
M-operator module 64 x 64 mm, mounting form 242M1 Escutcheon black, handle black	H400-A/ -D/ -E	4AM1
Legend plate silver, operator module 242M1		FAS4 - 9... (FA number)

Dimensions (mm)											
Product lines	A	B	B1	B2	C _{min}	C _{max}	C1	D1	D2	E	H
H400-A	64	70	89	108	102	117	40	15	5	48	80
H400-D/ -E	64	140	159	178	115	130	40	15	5	48	80