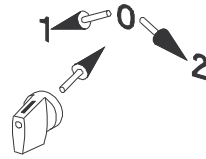
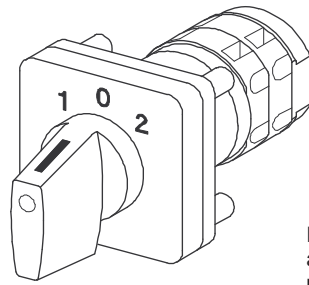
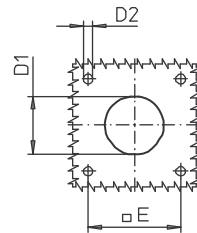
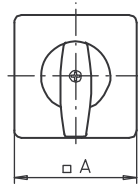
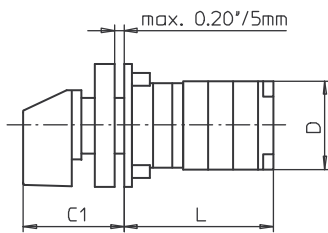


Front Mounting Switches

sälzer



Push handle in starting position at 12h, then turn to position 1 or position 2 where required.



Product lines
M200/T200

Front mounting switch
Operator module of next size

Four hole mounting
48 x 48 mm

Push-To-Turn
Adaptor \varnothing 30,5 mm

065M1 (IP40)

Complete switch	Poles	Product lines	Rated data (IEC 60947)			Order code number
			Operational current I_e	Operational power at 380–440 V		
			AC-21A A	AC-23A kW	AC-3 kW	
Rotary Cam Switches	1 ... 16	M200	20 25	7,5 11	5,5 7,5	M220 - 61 ... - 065M1 M225 - 61 ... - 065M1
45° spring return to both directions, spring return to OFF	1 ... 16	T200	32	15	11	T225 - 61 ... - 065M1
Other switching angle or function for spring return and stay-put on request						

SMD modules for basic switch

Mounting form module for 065M1	M200/ T200	BFA2 - 065
M-operator module 64 x 64 mm, mounting form 065M1		4PM1 - 12
Escutcheon black, M-handle black		
Legend plate silver, operator module 065M1		FAS4 - (FA number)

Dimensions (mm)

Typ	A	C1	D	D1*	D2	E	L with ... stages (max. 8)							
							1	2	3	4	5	6	7	8
M220	64	53	46	30,5	5	48	49	59	69	79	89	99	109	119
M221	64	53	46	30,5	5	48	52	65	78	91	104	117	130	143
M225	64	53	48	30,5	5	48	52	65	78	91	104	117	130	143
T225	64	53	50	30,5	5	48	54	69	84	99	114	129	144	159

*) hole tool for single hole mounting \varnothing 30,5 mm can be used.