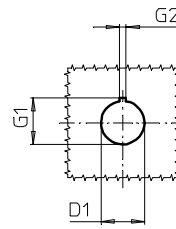
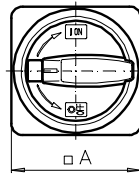
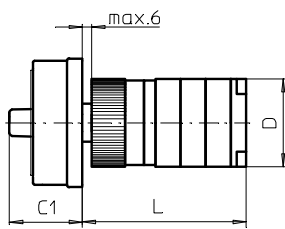
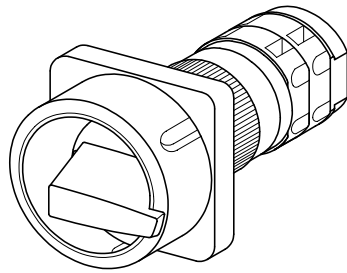


Front Mounting Switches

sälzer



Product lines
M200 / T200

Front mounting switch

Single hole mounting
ø 22,5 mm

206M1 (IP66)
206M4 (IP66)

Complete switch	Poles	Product line	Rated data (IEC 60947)			Order code number
			Operational current I _e	Operational power at 380–440 V		
			AC-21A A	AC-23A kW	AC-3 kW	
Main Switches Switching angle 90° OFF position padlockable 09h	1 ... 24	M200	20	7,5	5,5	M220 - 61 ... - 206M1
			25	11	7,5	M225 - 61 ... - 206M1
	1 ... 24	T200	32	15	11	T225 - 61 ... - 206M1
Main/Emergency-Off Switches Switching angle 90° OFF position padlockable 09h	1 ... 24	M200	20	7,5	5,5	M220 - 61 ... - 206M4
			25	11	7,5	M225 - 61 ... - 206M4
	1 ... 24	T200	32	15	11	T225 - 61 ... - 206M4

SMD modules for basic switch

Mounting form module for 206M.

M200 / T200

BFB2 - 219

M-padlock device 67 x 67 mm, mounting form 206M1
Escutcheon black, padlockable handle black

2FM1

M-padlock device 67 x 67 mm, mounting form 206M4
Escutcheon yellow, padlockable handle red

2FM4

Dimensions (mm)

Product lines	A	C1	D	D1	G1	G2	L with ... stages (max. 12)							each add. stage
							1	2	3	4	5	6	7	
M220	67	38	46	22,5	24,2	3,2	59	69	79	89	99	109	119	10
M221	67	38	46	22,5	24,2	3,2	62	75	88	101	114	127	140	13
M225	67	38	48	22,5	24,2	3,2	62	75	88	101	114	127	140	13
T225	67	38	50	22,5	24,2	3,2	64	79	94	109	124	139	154	15