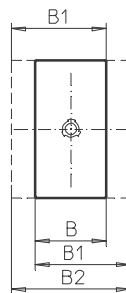
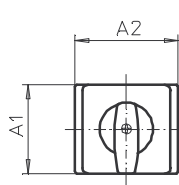
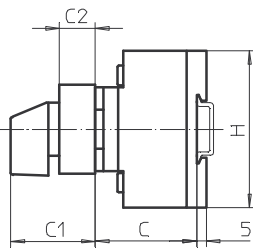
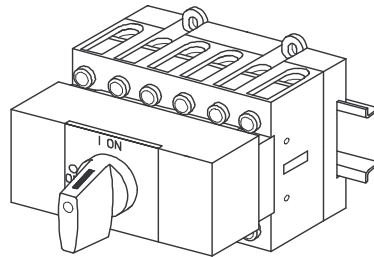
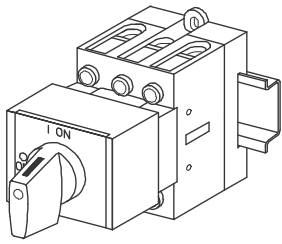


Base Mounting Switches

sälzer



**Product lines
B200-A/ -D/ -E**

Base mounting switch

Base/front mounting

DIN rail

With cover plate
45 mm aperture

026M1

Complete switch	Poles	Product lines	Rated data (IEC 60947)			Order code number
			Operational current I _e	Operational power at 380–440 V		
			AC-21A A	AC-23A kW	AC-3 kW	
ON-OFF Switches Switching angle 90°	3 ... 8	B200-A/ -D	50 63	18,5 22	15 18,5	B250 - 41 ... - 026M1 B263 - 41 ... - 026M1
Changeover with OFF Switching angle 90°	3 ... 4	B200-E	50 63	18,5 22	15 18,5	B250 - 71 ... - 026M1 B263 - 71 ... - 026M1

SMD modules for basic switch A02

Mounting form/operator module grey with
M-handle black, mounting form 026M1

B200-A
B200-D/ -E

BFB2 - 026M1
BFF2 - 026M1

Legend plate silver, mounting form/operator module 026M1

B200-A/ -D/ -E

FAV2 - 9... (FA number)

Dimensions (mm)

Product lines	A1	A2	B	B1	B2	C	C1	C2	H
B200-A	45	52,5	50	69	88	38	45	18,5	72
B200-D	45	105	100	119	138	40	51,5	25,5	72
B200-E	45	105	100	119	138	40	51,5	25,5	72