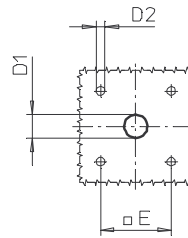
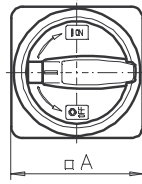
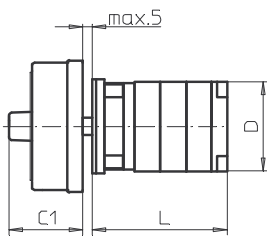
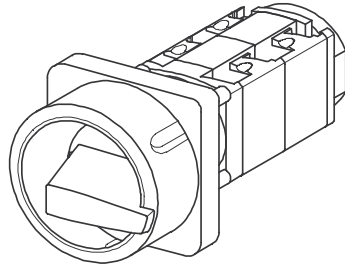


Front Mounting Switches

sälzer



**Product line
P200**

Front mounting switch

**Four hole mounting
36 x 36 mm**

033M1 (IP66)

033M4 (IP66)

Complete switch	Poles	Product line	Rated data (IEC 60947)			Order code number
			Operational current I _e	Operational power at 380–440 V		
			AC-21A A	AC-23A kW	AC-3 kW	
Main Switches Switching angle 90° OFF position padlockable 09h	1 ... 24	P200	20	7,5	5,5	P220 - 61 ... - 033M1
			25	11	7,5	P225 - 61 ... - 033M1
Main/Emergency-Off Switches Switching angle 90° OFF position padlockable 09h	1 ... 24	P200	20	7,5	5,5	P220 - 61 ... - 033M4
			25	11	7,5	P225 - 61 ... - 033M4

SMD modules for basic switch A01		
Mounting form module for 033M.	P200	BFB2 - 033
M-padlock device 67 x 67 mm, mounting form 033M1 Escutcheon black, padlockable handle black		2CM1
M-padlock device 67 x 67 mm, mounting form 033M4 Escutcheon yellow, padlockable handle red		2CM4

Dimensions (mm)														
Type	A	C1	D	D1	D2	E	L with ... stages (max. 12)						each add. stage	
							1	2	3	4	5	6	7	
P220	67	38	44	15	4,5	36	47	60	73	86	99	112	125	13
P221	67	38	44	15	4,5	36	50,5	67	83,5	100	116,5	133	149,5	16,5
P225	67	38	46	15	4,5	36	51	66	81	96	111	126	141	15
P226	67	38	46	15	4,5	36	54,5	73	91,5	110	128,5	147	165,5	18,5