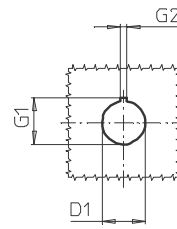
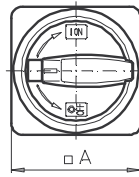
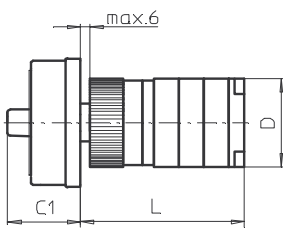
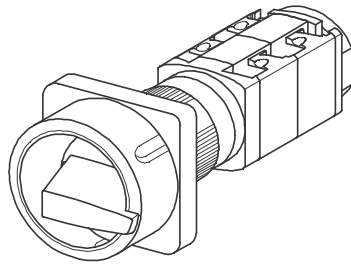


Front Mounting Switches

sälzer



Product line
P200

Front mounting switch

Single hole mounting
ø 22,5 mm

206M1 (IP66)

206M4 (IP66)

Complete switch	Poles	Product line	Rated data (IEC 60947)			Order code number								
			Operational current I _e	Operational power at 380–440 V										
			AC-21A A	AC-23A kW	AC-3 kW									
Main Switches Switching angle 90° OFF position padlockable 09h	1 ... 24	P200	20 25	7,5 11	5,5 7,5	P220 - 61 ... - 206M1 P225 - 61 ... - 206M1								
Main/Emergency-Off Switches Switching angle 90° OFF position padlockable 09h	1 ... 24	P200	20 25	7,5 11	5,5 7,5	P220 - 61 ... - 206M4 P225 - 61 ... - 206M4								
SMD modules for basic switch A01														
Mounting form module for 206M.			P200			BFB2 - 219								
M-padlock device 67 x 67 mm, mounting form 206M1 Escutcheon black, padlockable handle black						2FM1								
M-padlock device 67 x 67 mm, mounting form 206M4 Escutcheon yellow, padlockable handle red						2FM4								
Dimensions (mm)														
Type	A	C1	D	D1	G1	G2	L with ... stages (max. 12)							each add. stage
							1	2	3	4	5	6	7	
P220	67	38	44	22,5	24,2	3,2	66	79	92	105	118	131	144	13
P221	67	38	44	22,5	24,2	3,2	69,5	86	102,5	119	135,5	152	168,5	16,5
P225	67	38	46	22,5	24,2	3,2	70	85	100	115	130	145	160	15
P226	67	38	46	22,5	24,2	3,2	73,5	92	110,5	129	147,5	166	184,5	18,5