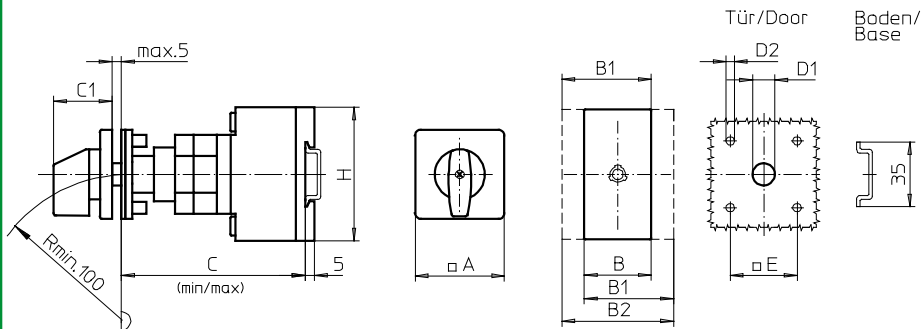
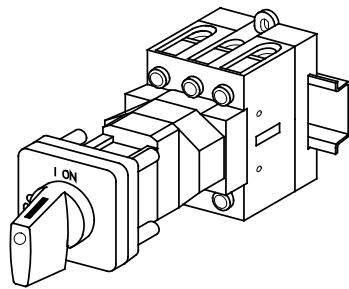


Base Mounting Switches

sälzer



Product lines
H200-A/B

Base mounting switch

Door interlock
Modular shaft extension

Four hole mounting
36 × 36 mm front

242M1 (IP66)

Complete switch	Poles	Product lines	Rated data (IEC 60947)			Order code number
			Operational current I _e	Operational power at 380–440V		
			AC-21A A	AC-23A kW	AC-3 kW	
ON-OFF Switches Switching angle 90°	3 ... 4	H200-A	20	5,5	3,7	H216 - 41 ... - 242M1
			25	7,5	5,5	H220 - 41 ... - 242M1
			32	11	7,5	H226 - 41 ... - 242M1
			40	15	11	H233 - 41 ... - 242M1
	3 ... 4	H200-B	63	22	18,5	H263 - 41 ... - 242M1

SMD modules for basic switch A02		
Mounting form module for 242M1	H200-A H200-B	BFA2 - 242 BFC2 - 242
M-operator module 48 × 48 mm, mounting form 242M1 Escutcheon black, handle black	H200-A/-B	2AM1
Legend plate silver, operator module 242M1		FAS2 - 9... (FA number)

Dimensions (mm)											
Product lines	A	B	B1	B2	C _{min}	C _{max}	C1	D1	D2	E	H
H200-A	48	36	48	60	92	107	32	12	4,5	36	70
H200-B	48	50	69	88	92	107	32	12	4,5	36	72

Modular shaft extensions see page B3-11.