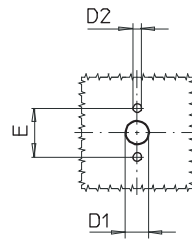
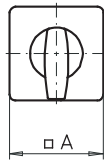
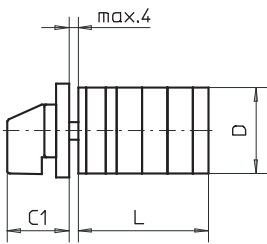
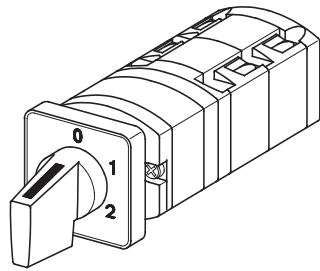


# Front Mounting Switches

**sälzer**



**Product line  
P100**

**Front mounting switch**

**Two hole mounting  
20 mm**

**003M1 (IP66)**

Complete switch	Poles	Product line	Rated data (IEC 60947)			Order code number
			Operational current I <sub>e</sub>	Operational power at 380-440V		
			AC-21A A	AC-23A kW	AC-3 kW	
Rotary Cam Switch Switching angle 30°/45°/60°/90°	1 ... 16	P100	10	3	2,2	<b>P110 - 61 ... - 003M1</b>

### SMD modules for basic switch A01

Mounting form module for 003M1	P100	<b>BFA1 - 003</b>
M-operator module 30 x 30 mm, mounting form 003M1		<b>1AM1</b>
Escutcheon black, handle black		
Legend plate silver, operator module 003M1		<b>FAS1 - .... (FA number)</b>

### Dimensions in mm

Type	A	C1	D	D1	D2	E	L with ... stages							
							1	2	3	4	5	6	7	8
P110	30	24	29	8	3,2	20	39	51	63	75	87	99	111	123