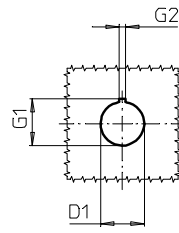
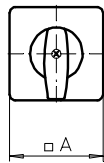
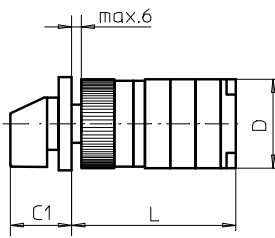
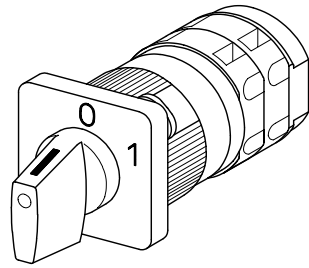


# Front Mounting Switches

# sälzer



**Product lines**  
M200 / T200

**Front mounting switch**

**Single hole mounting**  
ø 22,5 mm

**219M1 (IP66)**

| Complete switch  | Poles    | Product line | Rated data (IEC 60947)             |                                |            | Order code number            |
|--|----------|--------------|------------------------------------|--------------------------------|------------|------------------------------|
|  |          |              | Operational current I <sub>e</sub> | Operational power at 380–440 V |            |                              |
|  |          |              | AC-21A<br>A                        | AC-23A<br>kW                   | AC-3<br>kW |                              |
| Rotary Cam Switches<br>Switching angle 30°/45°/60°/90° | 1 ... 24 | M200         | 20                                 | 7,5                            | 5,5        | <b>M220 - 61 ... - 219M1</b> |
|  |          |              | 25                                 | 11                             | 7,5        | <b>M225 - 61 ... - 219M1</b> |
|  | 1 ... 24 | T200         | 32                                 | 15                             | 11         | <b>T225 - 61 ... - 219M1</b> |

### SMD modules for basic switch

Mounting form module for 219M1

M200 / T200

**BFB2 - 219**

M-operator module 48 x 48 mm, mounting form 219M1

**2DM1**

Escutcheon black, handle black

Legend plate silver, operator module 219M1

**FAS2 - .... (FA number)**

### Dimensions (mm)

| Product lines | A  | C1 | D  | D1   | G1   | G2  | L with ... stages (max. 12) |    |    |     |     |     |     | each add.<br>stage |
|---------------|----|----|----|------|------|-----|-----------------------------|----|----|-----|-----|-----|-----|--------------------|
|               |    |    |    |      |      |     | 1                           | 2  | 3  | 4   | 5   | 6   | 7   |                    |
| M220          | 48 | 32 | 46 | 22,5 | 24,2 | 3,2 | 59                          | 69 | 79 | 89  | 99  | 109 | 119 | 10                 |
| M221          | 48 | 32 | 46 | 22,5 | 24,2 | 3,2 | 62                          | 75 | 88 | 101 | 114 | 127 | 140 | 13                 |
| M225          | 48 | 32 | 48 | 22,5 | 24,2 | 3,2 | 62                          | 75 | 88 | 101 | 114 | 127 | 140 | 13                 |
| T225          | 48 | 32 | 50 | 22,5 | 24,2 | 3,2 | 64                          | 79 | 94 | 109 | 124 | 139 | 154 | 15                 |