

Base Mounting Switches

sälzer

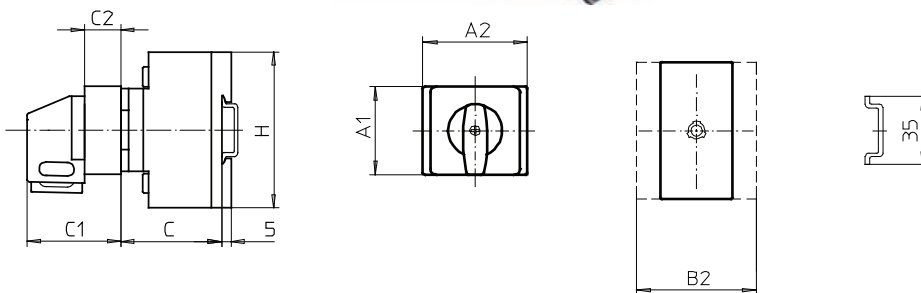
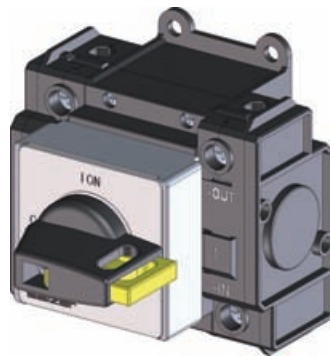
Product line D200

Base mounting switch

**Base/
front mounting**

DIN rail
with cover plate
45 mm aperture

026V1



Complete switch
Order code number

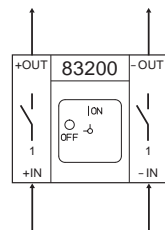
Terminal capacities
solid multiwire
min max min max

Voltage range DC21-B
250V 450V 650V 800V 1000V

Standard arc reduction system

Order code number	solid min	solid max	multiwire min	multiwire max	250V	450V	650V	800V	1000V
D211-83200-026V1	1,00	10,00	0,75	6,00	20A	16A	10A		
D221-83200-026V1	1,00	10,00	0,75	6,00		32A	20A		
D222-83200-026V1	4,00	16,00	2,50	10,00	50A	40A	32A		

1 string



SMD modules for basic switch modules

Mounting form module for 026V1	D200	BFG2 - 026V1
Legend plate silver, mounting form 026V1	D200	FAV2 - 9... (FA number)

Dimensions (mm)

Product line	A1	A2	B2	C	C1	C2	H
D200-DC – 1 string	45	48	77	42	42	15,5	80