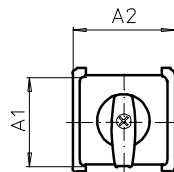
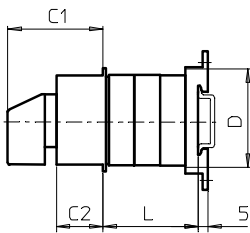
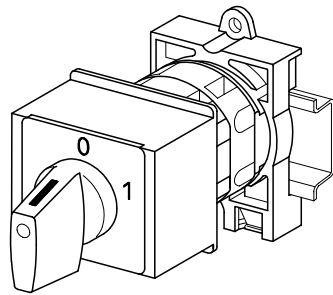


Base Mounting Switches

sälzer



Product lines
M200 / T200

Base mounting switch

Base/front mounting
Snap on mounting

DIN rail
with cover plate
45 mm aperture

026M1 (IP40)

Complete switch	Poles	Product line	Rated data (IEC 60947)			Order code number
			Operational current I _e	Operational power at 380–440 V		
			AC-21A A	AC-23A kW	AC-3 kW	
Rotary Cam Switches Switching angle 30°/45°/60°/90°	1 ... 24	M200	20	7,5	5,5	M220 - 61 ... - 026M1
			25	11	7,5	M225 - 61 ... - 026M1
	1 ... 24	T200	32	15	11	T225 - 61 ... - 026M1

SMD modules for basic switch

Mounting form/operator module grey
With M-handle black, mounting form 026M1

M200 / T200

BFC2 - 026M1

Legend plate silver, mounting form/operator module 026M1

FAV2 - (FA number)

Dimensions (mm)

Product lines	A1	A2	C1	C2	D	L with ... stages (max. 12)							each add. stage
						1	2	3	4	5	6	7	
M220	45	52,5	50	24	46	25	35	45	55	65	75	85	10
M221	45	52,5	50	24	46	28	41	54	67	80	93	106	13
M225	45	52,5	50	24	48	28	41	54	67	80	93	106	13
T225	45	52,5	50	24	50	30	45	60	75	90	105	120	15