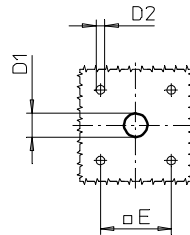
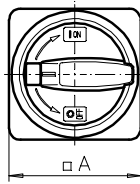
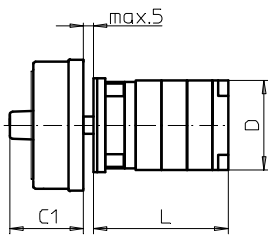
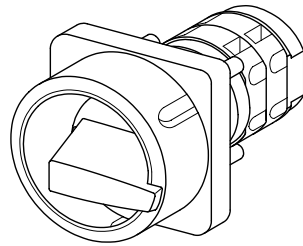


# Front Mounting Switches

# sälzer



**Product lines**  
**M200 / T200**

**Front mounting switch**

**Four hole mounting**  
36 x 36 mm

**033M1 (IP66)**

**033M4 (IP66)**

Complete switch	Poles	Product line	Rated data (IEC 60947)			Order code number
			Operational current I <sub>e</sub>	Operational power at 380–440 V		
			AC-21A A	AC-23A kW	AC-3 kW	
Main Switches	1 ... 24	M200	20	7,5	5,5	<b>M220 - 61 ... - 033M1</b>
Switching angle 90°			25	11	7,5	<b>M225 - 61 ... - 033M1</b>
OFF position padlockable 09h	1 ... 24	T200	32	15	11	<b>T225 - 61 ... - 033M1</b>
Main/Emergency-Off Switches	1 ... 24	M200	20	7,5	5,5	<b>M220 - 61 ... - 033M4</b>
Switching angle 90°			25	11	7,5	<b>M225 - 61 ... - 033M4</b>
OFF position padlockable 09h	1 ... 24	T200	32	15	11	<b>T225 - 61 ... - 033M4</b>

### SMD modules for basic switch

Mounting form module for 033M.

M200 / T200

**BFB2 - 033**

M-padlock device 67 x 67 mm, mounting form 033M1  
Escutcheon black, padlockable handle black

**2CM1**

M-padlock device 67 x 67 mm, mounting form 033M4  
Escutcheon yellow, padlockable handle red

**2CM4**

### Dimensions (mm)

Product lines	A	C1	D	D1	D2	E	L with ... stages (max. 12)							each add. stage
							1	2	3	4	5	6	7	
M220	67	38	46	15	4,5	36	40	50	60	70	80	90	100	10
M221	67	38	46	15	4,5	36	43	56	69	82	95	108	121	13
M225	67	38	48	15	4,5	36	43	56	69	82	95	108	121	13
T225	67	38	50	15	4,5	36	45	60	75	90	105	120	135	15